



# ALUPROP

Aluminium prop



// Flexible, lightweight and resistant



// Index	Features	2
	Advantages	4
	Solutions	5
	Basic components	7



## // Features



► ALUPROP props and towers

► Product **approved** and **certified**

Deutsches  
Institut  
für  
Bautechnik



## I ALUPROP Prop

- Designed for shoring of slab formwork and shoring in general.
- The **lightness, great load capacity** and **multiple solutions** provided by it are its main features.

► **Maximum height** with single prop: 6 m (7 m with 1 m supplement).

► **Maximum load** with 6 m single prop:  
· European criterion/Inner tube in bottom part: 26.1 kN.  
· American criterion: 39.1 kN.

### ► Prop components

- 1 Base plate
- 2 Inner tube
- 3 Adjustment nut
- 4 Intermediate plate
- 5 Click
- 6 Outer tube



European Criterion = EN 16031;  
American Criterion = ANSI/ASSE A10.9.



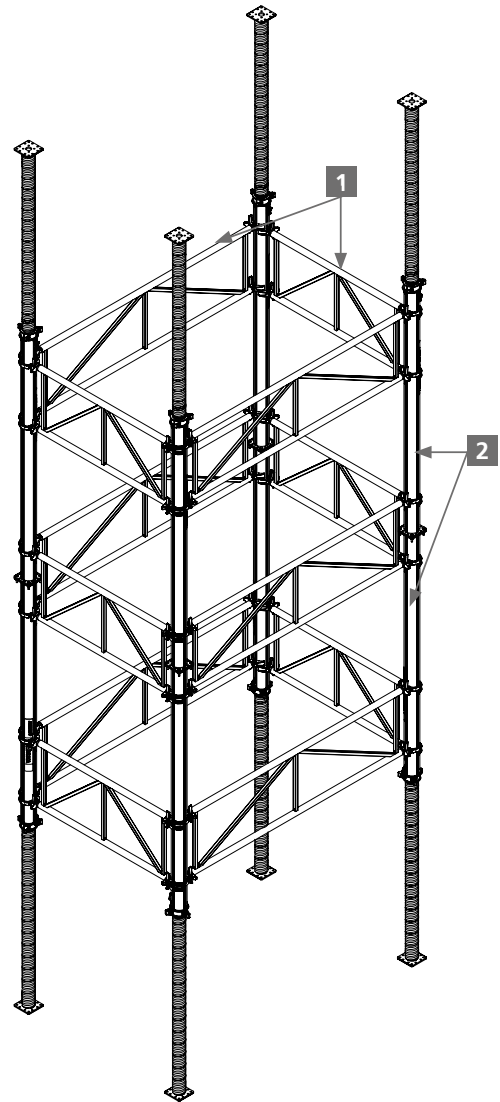
► ALUPROP prop





## ALUPROP Towers

- ▶ Falsework can be shaped by joining the ALUPROP props and the bracing frames. We can thus achieve **greater stability**, allowing the building of **high-rise falsework** and **incrementing working loads**.
- ▶ **Maximum height** permitted for ALUPROP towers: 12 m.
- ▶ **Tower components**
  - 1 Bracing frames
  - 2 Props on top of props



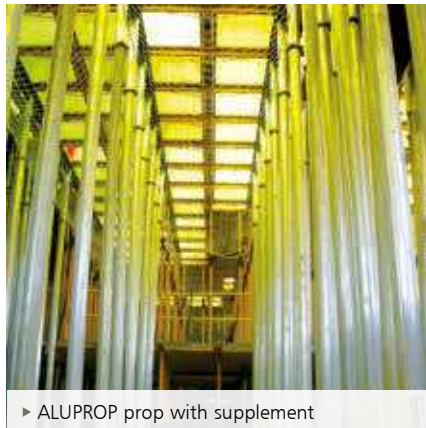


## // Advantages

- ▶ **Lightweight**, made of aluminium.
- ▶ **Resistant**, great load capacity.
- ▶ Inner tube protected against disengagement of the outer tube.
- ▶ Simple and fast length regulation.
- ▶ Dual height regulation, thanks to the ALUPROP screw jack.
- ▶ **Self-cleaning thread**, to eliminate concrete sticking on the inner tube.
- ▶ Fastening click between outer tube and nut.
- ▶ Simple prop stripping thanks to the drive nut with holes and wings.



▶ Fastening click



▶ ALUPROP prop with supplement



▶ ALUPROP tower lifting

### ▶ **Flexible:**

- Braceable prop with bracing frames or bracing hooks or tubes.
- Allows intermediate working platforms.
- Possibility of putting prop on prop. Allows the building of high-rise formwork.
- Falsework can be assembled at the ground level, horizontally. Favours ergonomics and workers' safety.





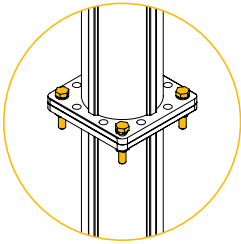


## // Solutions

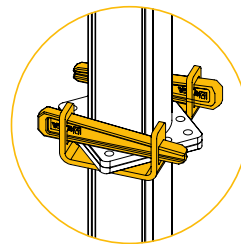
### | Configurations

► **Prop joint:** Joint between the ALUPROP Props (Maximum height: 12 m).

► With bolts

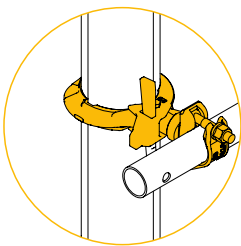


► With ALUPROP clamp

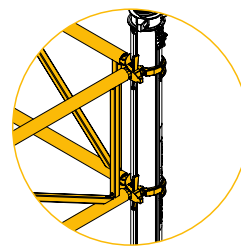


► **Bracing between ALUPROP props and towers**

► With bracing hook and tube



► With bracing frames



### | Slab formwork with ALUPROP



► VR Table pre-assembled slab formwork with MK waler



► VR Table pre-assembled slab formwork with VM-20 beam





► ENKOFLEX timber beam formwork



► CC-4 aluminium slab formwork

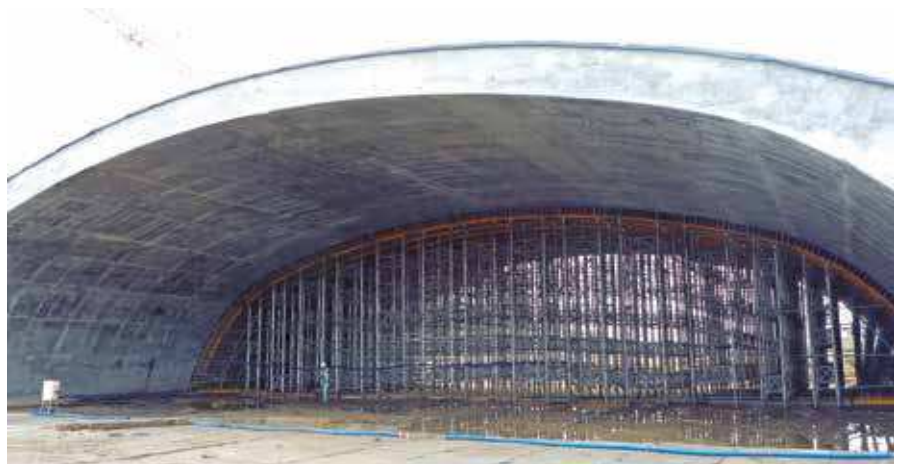


► ENKOFORM HMK civil engineering slab formwork

## Other propping



► Shoring in bridges



► Shoring in cut-and-cover tunnels



► Shoring in single-sided wall formwork



► Shoring in inclined walls

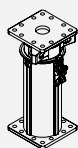


## Basic components

		kg
ALUPROP 1.65-2.8	2220010	17.6
ALUPROP 2.2-3.7	2220020	21.6
ALUPROP 3.3-4.8	2220030	25.4
ALUPROP 4.5-6.0	2220040	29.6



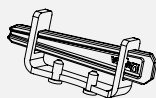
ALUPROP spindle	2220200	5.8
-----------------	---------	-----



Supplement 1 m	2220055	4.5
----------------	---------	-----



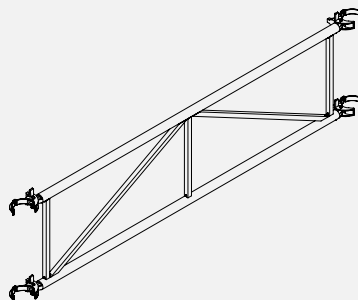
		kg
ALUPROP clamp	2220080	1.1



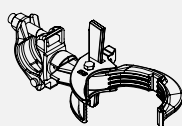
Hexagonal screw M10x50 DIN933 8.8	9521592	0.044
Nut M10 DIN-934-5.6	0241000	0.01
Spring washer B10 DIN 127 ZN	9000001	0.001



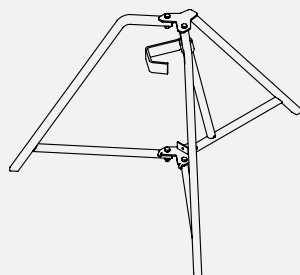
Bracing frame 0.75	2220140	10.2
Bracing frame 1.5	2220125	15
Bracing frame 1.57	2220130	15.4
Bracing frame 2.075	2220145	18.1
Bracing frame 2.32	2220120	19.4



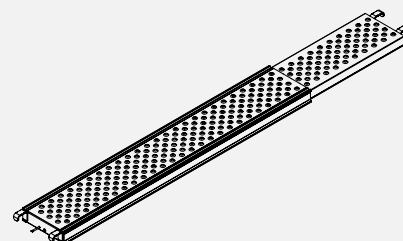
Fix bracing hook	2220075	2.2
Swivel bracing hook	2220100	2.3



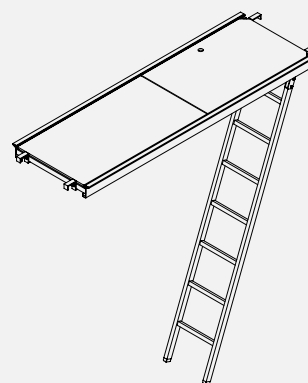
Universal tripod	2220090	11.2
------------------	---------	------



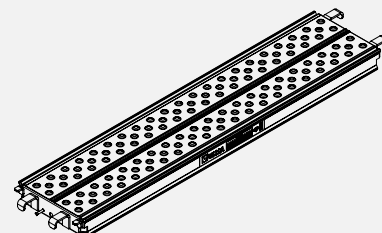
		kg
Extending platform 1-1.5	2067035	12.6
Extending platform 1.5-2.35	2067048	17.3
Extending platform 2-2.7	2067043	20.6



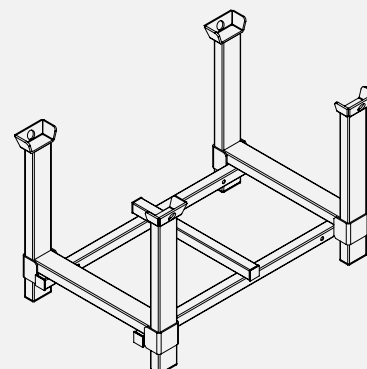
Trapdoor platform 1.5	2128152	13.5
-----------------------	---------	------

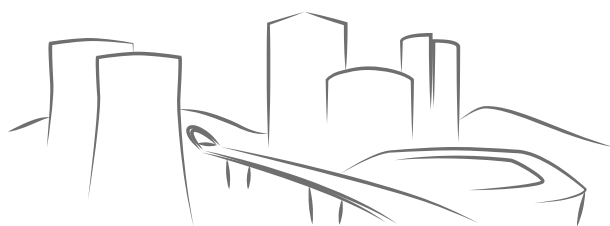


Platform 1.5	2127716	12.4
--------------	---------	------



Pallet E1	1800000	53
-----------	---------	----





**From the beginning** of your projects



**ULMA C y E, S. Coop.**

Ps. Otadui, 3 - P.O. 13

20560 Oñati, Spain

T. +34 943 034 900

F. +34 943 034 920

02FAM65

►► [www.ulmaconstruction.com](http://www.ulmaconstruction.com)

**IMPORTANT:**

Any safety provisions as directed by the appropriate governing agencies must be observed when using our products. The pictures in this document are snapshots of situations at different stages of assembly, and therefore are not complete images. For the purpose of safety, they should not be deemed as definitive. All of the indications regarding safety and operations contained in this document, and the data on stress and loads should be respected. ULMA's Technical Department must be consulted anytime that field changes alter our equipment installation drawings. The loads featured in this document, related to the basic elements of the product, are approximate. Our equipment is designed to work with accessories and elements made by our company only. Combining such equipment with other systems is not only dangerous but also voids any or all our warranties. The company

reserves the right to introduce any modifications deemed necessary for the technical development of the product.

All rights reserved. Neither all nor part of this document may be reproduced or transmitted in any way by any electronic or mechanical procedure, including photocopy, magnetic recording or any other form of information storage or retrieval system without the written permission.

© Copyright by ULMA C y E, S. Coop