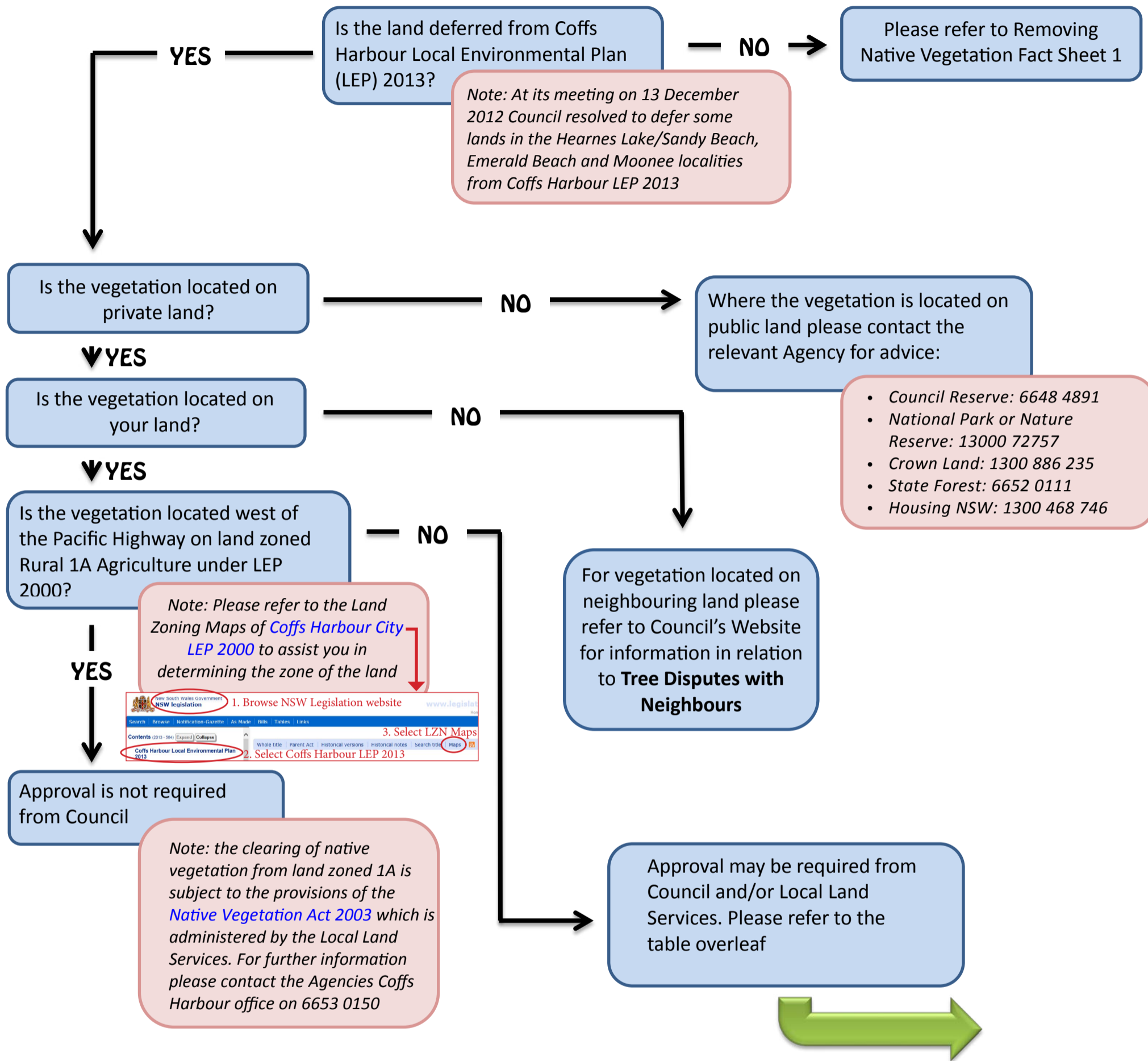


# REMOVING NATIVE VEGETATION FACT SHEET 2 (DEFERRED AREAS)



**Note:** for the purpose of Council's Tree Preservation Order, a tree means:

- any native woody-stemmed plant with either a height greater than 3m or a girth of more than 15cm, and
- any heath land, shrub land, sedge land or rush land identified by Council's native vegetation maps.

**Note:** a person shall not carry out or permit or direct or cause: any ring barking, cutting down, topping, lopping, removing or wilful destruction of any tree or trees to which Council's tree preservation order applies without development consent.

**Note:** wilful destruction includes the lighting of a fire on land unless the fire is undertaken in accordance with a bushfire hazard reduction certificate issued under the Rural Fires Act 1995.

**Note:** other restrictions may apply to the land relating to the removal of trees or other vegetation such as positive covenants, property vegetation management plans and vegetation management plans.

Exemptions apply for certain activities authorised under the Native Vegetation Act 2003, activities within a State Forest or on land reserved under the Forestry Act 1916, any action authorised under the Electricity Supply Act 1995, the Roads Act 1993 or the Surveying and Spatial Information Act 2002 or any plants declared to be noxious weeds under the Noxious Weeds Act 1993. Certain exemptions also apply for Educational Establishments and for trees identified under a bushfire management plan.

# REMOVAL OF NATIVE VEGETATION FACT SHEET 2 (DEFERRED AREAS)



ZONE	APPROVAL REQUIREMENTS
<b>Rural 1A Agriculture</b> (West of the Pacific Highway)	<b>Approval is not required from Council</b> <i>Note: the provisions of the Native Vegetation Act 2003 apply, please contact Local Land Services on (02) 6653 0150</i>
<b>Rural 1A Agriculture</b> (East of the Pacific Highway and greater than 1 hectare)	<b>Approval is required from Council</b> <i>Note:</i> <ul style="list-style-type: none"> <li>- Development Consent is required from Council to remove trees from this land. For further information please refer to Council's Website.</li> <li>- The provisions of the Native Vegetation Act 2003 also apply, please contact Local Land Services on (02) 6653 0150</li> </ul>
<b>Rural 1A Agriculture</b> (East of the Pacific Highway and equal to or less than one hectare)	<b>Approval is not required from Council</b> <i>Note: the provisions of the Native Vegetation Act 2003 apply, please contact Local Land Services on (02) 6653 0150</i>
<b>Rural 1B Living</b> (Greater than 1 hectare)	<b>Approval is required from Council</b> <i>Note:</i> <ul style="list-style-type: none"> <li>• Development Consent is required from Council to remove trees from this land. For further information please refer to Council's Website.</li> <li>• The provisions of the Native Vegetation Act 2003 also apply, please contact Local Land Services on (02) 6653 0150</li> </ul>
<b>Rural 1B Living</b> (Equal to or less than one hectare)	<b>Approval is not required from Council</b> <i>The provisions of the Native Vegetation Act 2003 apply, please contact Local Land Services on (02) 6653 0150</i>
<b>Residential 2A Low Density</b> <b>Residential 2B Medium Density</b> <b>Residential 2C Medium-High Density</b> <b>Residential 2E Tourist</b> (Greater than 2,000m <sup>2</sup> )	<b>Approval is required from Council</b> <i>Note: Development Consent is required from Council to remove trees from this land. For further information please refer to Council's Website.</i>
<b>Residential 2A Low Density</b> <b>Residential 2B Medium Density</b> <b>Residential 2C Medium-High Density</b> <b>Residential 2E Tourist</b> (Equal to or less than 2,000m <sup>2</sup> )	<b>Approval is not required from Council</b>
<b>Industrial 4A</b> (Greater than 4,000m <sup>2</sup> )	<b>Approval is required from Council</b> <i>Note: Development Consent is required from Council to remove trees from this land. For further information please refer to Council's Website.</i>
<b>Industrial 4A</b> (Equal to or less than 4000m <sup>2</sup> )	<b>Approval is not required from Council</b>
<b>Open Space 6C Private Recreation</b> (Greater than 4,000m <sup>2</sup> )	<b>Approval is required from Council</b> <i>Note:</i> <ul style="list-style-type: none"> <li>• Development Consent is required from Council to remove trees from this land. For further information please refer to Council's Website.</li> <li>• The provisions of the Native Vegetation Act 2003 also apply, please contact Local Land Services on (02) 6653 0150</li> </ul>
<b>Open Space 6C Private Recreation</b> (Equal or less than 4,000m <sup>2</sup> )	<b>Approval is not required from Council</b> <i>Note: the provisions of the Native Vegetation Act 2003 apply, please contact Local Land Services on (02) 6653 0150</i>
<b>Environmental Protection 7A Habitat &amp; Catchment</b> <b>Environmental Protection 7B Scenic Buffer</b> <b>Environmental Protection 7C Coastal</b>	<b>Approval is required from Council</b> <i>Note:</i> <ul style="list-style-type: none"> <li>• Development Consent is required from Council to remove trees from this land. For further information please refer to Council's Website.</li> <li>• The provisions of the Native Vegetation Act 2003 also apply, please contact Local Land Services on (02) 6653 0150</li> </ul>