

## GETTING TO KNOW YOUR PARKING SIGNS AND LINES

Parking signs and lines may vary in different parts of Brisbane. Here are some examples of common parking signs and lines you'll see throughout the city.



### Clearway signs

Clearways are used to improve traffic flow and illegally parked vehicles may be towed at the owner's expense. Some clearways only operate during peak times. If there are no times indicated on the sign, the clearway applies 24 hours a day.



### No Stopping signs

Vehicles are not permitted to stop in No Stopping zones. Some No Stopping zones only operate at certain times. If there are no times or days on the sign, stopping is not permitted at any time.



### Yellow No Stopping lines

Stopping is not permitted at any time on the side of roads marked with a continuous yellow line. This applies to all vehicles at any time.



### No Parking signs

No Parking signs allow you to stop your vehicle for up to two minutes to pick up or drop off passengers and goods. Drivers must remain within three metres of the vehicle at all times.



### Traffic and Parking Control Area Boundary signs

Installed on all entries to the area, these signs indicate area-wide conditions that apply. Signed parking restrictions along streets override area-wide parking conditions during the times and days indicated.



### End Traffic and Parking Control Area Boundary signs

These signs are located on all exits from areas. These signs indicate the end of the area-wide parking conditions.



### Passenger Loading Zone signs

Motorists can stop in these zones to drop off and pick up passengers.  
**Passenger loading** – Usually two-minute maximum.



### Commercial Vehicle Loading Zone signs

Motorists of commercial vehicles can stop in these zones to drop off and pick up goods.  
**Goods (commercial)** – Usually 20-minute maximum.



### Shared Loading Zone signs

Motorists can stop in these zones to drop off and pick up passengers and goods.  
**Passenger loading** – Usually two-minute maximum.  
**Goods (commercial)** – Usually 20-minute maximum.



### Loading Zone signs

Motorists can stop in these zones to drop off and pick up passengers and goods.  
**Passenger loading** – two-minute maximum.  
**Goods (non-commercial, for example, passenger only vehicles)** – 20-minute maximum.  
**Goods (commercial, for example, buses and trucks)** – 30-minute maximum.



### Bus Zone signs

Bus Zones are used by scheduled bus services to pick up and set down passengers. Some bus zones are allocated as short-term holding zones or parking for buses and coaches.



### Taxi Zone signs

Only taxis are permitted to stop in Taxi Zones. Taxi Zones are designated locations where passengers can be picked up and dropped off by taxis.



### Works Zone signs

Only vehicles used for nearby construction work are permitted to stop in Works Zones. For example, this may be trucks delivering steel or concrete which require direct access to the construction site.



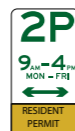
### Mail Zone signs

Authorised postal vehicles are permitted to stop in these areas. All other motorists are not permitted to stop in Mail Zones, even when using post boxes or visiting Australia Post offices.



### Disability Parking Zone signs

Disability parking spaces are provided to help people with limited mobility get in and out of their vehicles. Motorists are not permitted to stop in these spaces without displaying a valid Australian Disability Parking Scheme permit.



### Residential Parking Permit Area signs

The parking time limit applies to all vehicles during the days and times indicated on the sign. If the sign says 'RESIDENT PERMIT EXCEPTED', the time limit does not apply to vehicles with a valid resident or visitor parking permit.



### Transit Lane signs

Transit Lane signs indicate where transit lanes operate along roads. These lanes encourage more people to travel in each car, helping to reduce traffic congestion. Parking is not permitted in transit lanes when they are operational.



### Bus Stop signs

Unless signed otherwise, stopping is not permitted within 20 metres on the approach, and 10 metres on the departure side of a bus stop sign.



### Tow-Away Zones

If your vehicle has been towed for unlawfully stopping or parking, please phone Council's 24-hour Contact Centre on 3403 8888 for assistance.

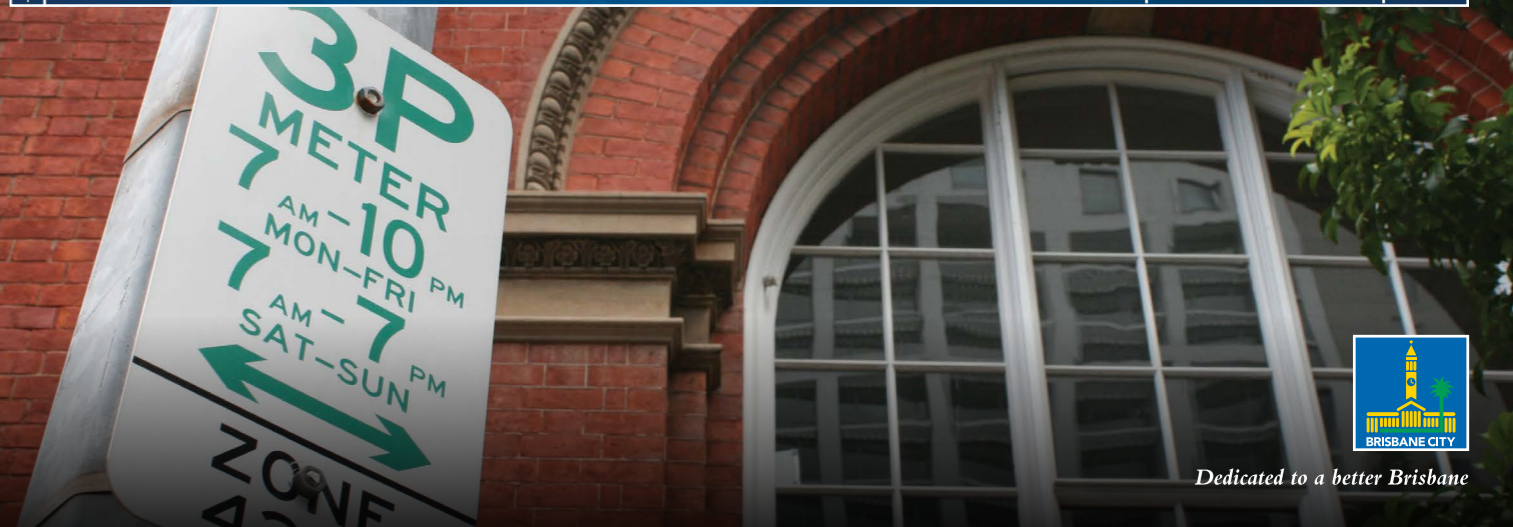


### Bus Lane signs

Bus Lane signs indicate where bus lanes operate along roads. These lanes improve the performance of Brisbane's public transport network. Parking is not permitted in bus lanes when they are operational.

# PARKING GUIDE TO BRISBANE

It's all part of Council's plan



Dedicated to a better Brisbane

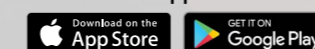
## TIPS TO HELP YOU PARK SAFELY AND LAWFULLY

- Some locations in Brisbane have different restrictions at different times of the day. Make sure you read the signs carefully so you understand the restrictions that apply.
- Do not stop or park on yellow lines, in no stopping zones, clearways, bus zones, taxi zones or other special use zones.
- Unless otherwise signed, do not park on or across footpaths, driveways, medians and kerb ramps.
- Be aware that some metered parking zones change to clearways or no stopping zones at peak times, typically between 7am and 9am, and 4pm and 7pm, Monday to Friday.
- There are a number of traffic and parking control areas in place across Brisbane, where area-wide parking limits and regulations apply. Large signs located on each area's boundaries explain conditions.
- Do not stop in a commercial loading zone unless you are dropping off or picking up goods. Your vehicle must be a commercial vehicle under the Queensland Road Rules, or have a commercial vehicle permit that has been issued by Brisbane City Council.
- Generally, you can only stop for two minutes at passenger loading zones so please ensure you check the parking signs.
- On-street parking within the central business district (CBD) is intended for short-term parking only. For longer stays please consider using public transport or parking at an off-street parking location.
- Free 15-minute parking is available at more than 7500 metered parking spaces across Brisbane, outside the CBD and at Council's two off-street car parks at Wickham Terrace and King George Square.
- Australian Disability Parking Scheme permit holders can park free of charge for an unlimited amount of time where the parking limit sign is 30 minutes or more. Where the time limit is less than 30 minutes, they can park for up to 30 minutes.

## PLEASE CONSIDER KEEPING THIS GUIDE IN YOUR CAR.

**CellOPark**  
Australia

Now available to download for free from app stores.



Customers can pay for metered parking at the meters or by downloading and using the CellOPark Australia app which means you only pay for the parking you use.

Brisbane City Council  
GPO Box 1434  
Brisbane Qld 4001

Printed on sustainable paper



CA16-649693-02-3160  
©2018 Brisbane City Council

brisbane.qld.gov.au  
3403 8888

/BrisbaneCityCouncil  
@brisbanecityqld  
@brisbanecitycouncil

## BRISBANE PARKING AREAS

To manage on-street parking demand, a number of traffic and parking control areas, and resident permit parking schemes are in place across Brisbane.

### Traffic and Parking Control Areas

Traffic and parking control areas have signs installed on all entries indicating the area-wide parking conditions. Parking signs located on individual streets within the area override these conditions for days and times indicated on the sign. Residents' and their visitors' vehicles that have a valid permit are exempt from the area-wide parking conditions and signed parking restrictions which indicate 'RESIDENT PERMIT EXCEPTED'.

### Resident Permit Parking Schemes

Resident permit parking schemes differ from traffic and parking control areas as parking signs are installed in individual streets indicating the parking conditions that apply. Residents' and their visitors' vehicles that have a valid permit are exempt from signed parking restrictions which indicate 'RESIDENT PERMIT EXCEPTED'.

For more information about Brisbane's parking areas and permits, please visit [brisbane.qld.gov.au](http://brisbane.qld.gov.au) or phone Council's Contact Centre on **3403 8888**.

## PARKING ENFORCEMENT

Parking enforcement is one of the ways in which Council is helping to ease congestion and improve safety for motorists.

Council enforces parking regulations by responding to complaints and carrying out proactive patrols.

If you receive a fine for unlawful parking, you have 28 days from the issue date to pay. You can pay online at Council's website ([brisbane.qld.gov.au](http://brisbane.qld.gov.au)), by visiting an Australia Post Office, or by phoning Council's parking infringement line on **1300 012 747**.

If you think your parking fine was issued in error, you can lodge a dispute, in writing, within 28 days from the date the fine was issued to avoid further notices or additional costs. Disputes can be lodged online at [brisbane.qld.gov.au](http://brisbane.qld.gov.au) or by phoning Council's Contact Centre on **3403 8888** for assistance.

To apply for a payment plan for your parking fine, phone Council's parking infringement line on **1300 012 747**.

## METERED PARKING

Parking meters are used to regulate parking in areas where on-street parking is in high demand. Prices are set depending on the part of the city in which you park. In Brisbane there are three parking zones:

- Zone 1 - Brisbane CBD █
- Zone 2 - city fringe █
- Zone 3 - rest of Brisbane.

Fifteen-minute free parking is available at more than 7500 metered parking spaces across Brisbane, excluding the CBD. Simply visit the meter, enter your vehicle's registration number, and choose the 'Parking under 15 minutes' option.

If you are planning to park in a metered parking space for more than 15 minutes, or within the CBD, you can pay by cash, via the CelloPark Australia app or by using the Tap N Go payment option.

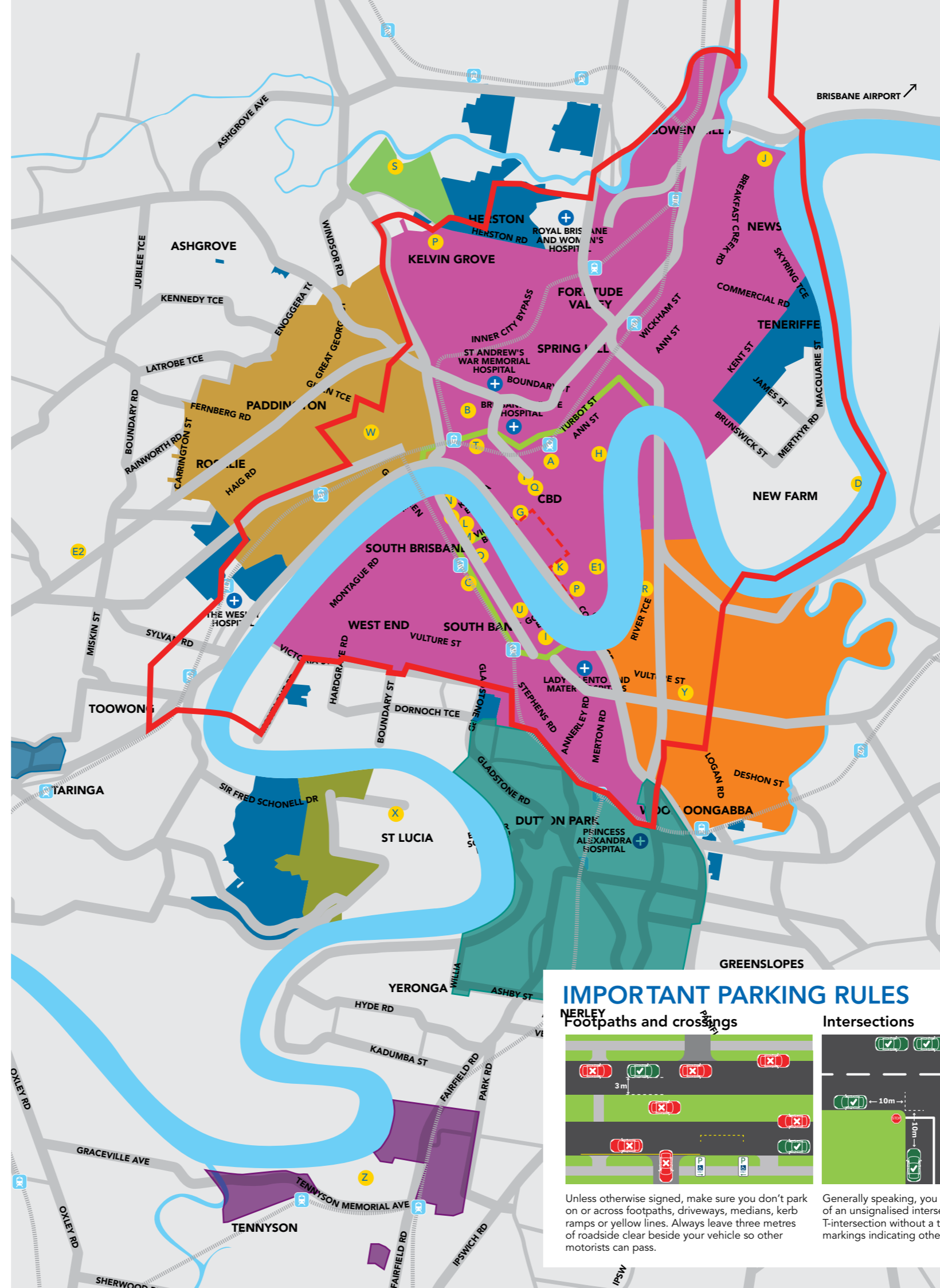
## TOWED VEHICLES

Vehicles may be towed if they are parked in a Clearway or No Stopping Zone. They may also be towed in some situations if they are considered a hazard to other road users.

If you think your vehicle has been towed, you can phone Council's Contact Centre on **3403 8888** for assistance.



Visit [brisbaneparkingguide.com.au](http://brisbaneparkingguide.com.au) for information about inner-city parking options and deals including parking station and street meter locations, as well as details about special offers and where to find park 'n' ride stations.



## PLACES OF INTEREST

- Anzac Square
- Roma Street Parkland
- Brisbane Convention and Exhibition Centre
- Brisbane Powerhouse
- City Botanic Gardens
- Brisbane Botanic Gardens Mt Coot-tha
- Brisbane City Hall
- Treasury Casino
- Customs House
- Queensland Maritime Museum
- Newstead House
- Parliament House
- Queensland Art Gallery
- Queensland Museum and Science Centre
- Gallery of Modern Art
- Queensland Performing Arts Centre
- Queensland University of Technology campuses (2)
- Queen Street Mall (including Brisbane Visitor Information and Booking Centre)
- Kangaroo Point Cliffs
- Ballymore Stadium
- Brisbane Transit Centre
- South Bank Parklands
- State Library of Queensland
- Suncorp Stadium (Lang Park)
- The University of Queensland
- The Gabba (Brisbane Cricket Ground)
- Queensland Tennis Centre
- + Hospitals
- T Train station
- █ Queen's Wharf Brisbane development precinct (parking disruptions may occur)

## PARKING AREAS

(UNLESS OTHERWISE SIGNED)

- █ Ballymore Traffic Area (P5min Event Days)
- █ Brisbane Central Traffic Area (2P)
- █ Lang Park Traffic Area (1/4P Event Days)
- █ St Lucia Traffic Area (2P)
- █ Dutton Park Parking Control Area (2P)
- █ Gabba Traffic Area (2P, 1/4P Event Days)
- █ Queensland Tennis Centre Parking Control Area (1P Event Days)
- █ Residential Permit Parking Scheme (As signed)

This map is a summary of inner-city parking areas only as of January 2018. For up-to-date information and detailed street maps for all parking areas in Brisbane visit [brisbane.qld.gov.au](http://brisbane.qld.gov.au)

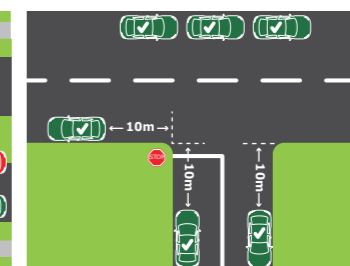
## IMPORTANT PARKING RULES

### Footpaths and crossings



Unless otherwise signed, make sure you don't park on or across footpaths, driveways, medians, kerb ramps or yellow lines. Always leave three metres of roadside clear beside your vehicle so other motorists can pass.

### Intersections



Generally speaking, you should not stop within 20 metres of traffic lights, or within 10 metres of an unsignalised intersection, unless signed otherwise. You can park on the far side of a T-intersection without a traffic light on the continuing road, unless there are signs or line markings indicating otherwise.

### Traffic lights

