

## Bridge replacement works German Creek

Queensland Rail will be replacing the timber rail bridge at German Creek with a new concrete structure during a scheduled rail closure between 10 and 11 October 2016.

### Overview of work

Location	Dates and hours of work	Type of work
German Creek bridge	<ul style="list-style-type: none"><li>6am Monday 10 October to 6pm Tuesday 11 October</li></ul>	<ul style="list-style-type: none"><li>Construction of concrete bridge over German Creek</li><li>Replacement of track</li></ul> <p>This work involves the use of heavy, loud machinery including on-track vehicles, trucks, excavators, cranes and loaders with horns, bright flashing lights and reversing beepers.</p>

Queensland Rail is aware noise and lighting from such operations may cause temporary inconvenience to our valued neighbours. Every effort will be made to carry out these works with minimal disruption.

For more information regarding this bridge replacement work please phone **13 16 17** (between 8am and 5pm Monday – Friday) or email [communityengagement@qr.com.au](mailto:communityengagement@qr.com.au)

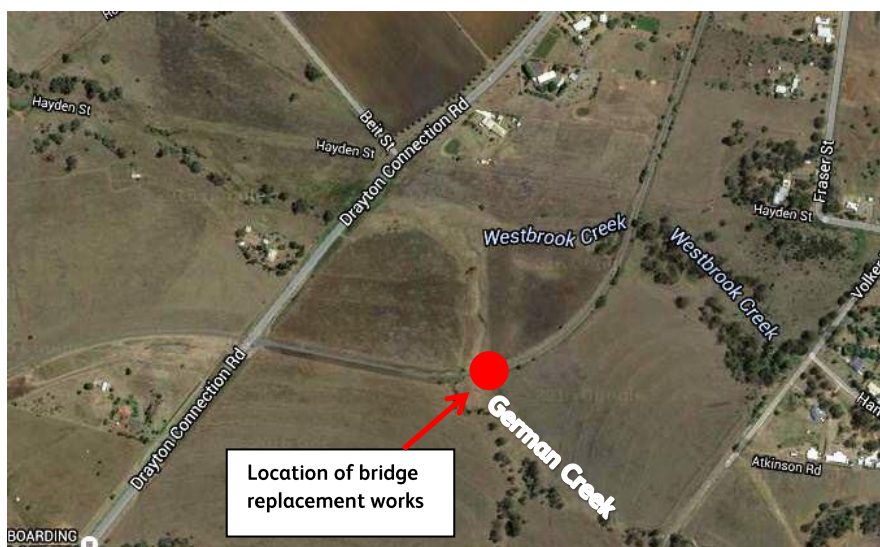


Image courtesy of Google Earth